

**A FRAMEWORK FOR THE FUTURE
 PLANNING OF ABI SERVICES IN
 TORONTO**

Hedy Chandler, Committee Chair
 Charissa Levy, Executive Director
 Judy Moir, Ass't Executive Director
 November 24, 2006

Presentation Outline

- Objective
- Process and Committee Activities
- Recommendations
- Model of Service
- Planning Framework
- Subsequent Activity and Next Steps
- Discussion

www.abinetwork.ca

Project Objective

- Create a planning framework that would provide a consistent and deliberate process for planning for ABI services in Toronto
- Develop recommendations for the delivery of ABI services in Toronto now, based on our understanding of the current need and capacity, and into the future

www.abinetwork.ca

Process

- Network approached the Toronto Region of the Ministry of Health and Long-Term Care
- Contacted the Toronto District Health Council (TDHC)
- Established a working group that included representatives from acute care, rehabilitation and community services
- Network took over the project with the closing of the TDHC with the assistance of an external consultant
- Report has been completed, distributed to stakeholders including the Ministry of Health and Toronto Region LHINs and is available on the Toronto ABI Network website.

www.abinetwork.ca

Committee Activities

The project committee met regularly in order to:

- Gather and review incidence and prevalence data
- Conduct a scan of the current landscape of ABI services through a survey of providers
- Conduct key informant interviews
- Conduct a literature review
- Develop recommendations for the provision and planning of current and future ABI services in Toronto,
- Develop a planning framework that would provide a mechanism to be used in future planning

www.abinetwork.ca

Planning Committee

Chair: Hedy Chandler	Community Head Injury Resource Services
Heather Brien	Toronto Community Care Access Centre/ Toronto ABI Network
Debra Carew	Sunnybrook Hlth. Sciences Centre
Barbara Cawley	COTA Health
Dr. Monica Gemeinhardt	Bloorview Kid's Rehab
Dr. Gary Gerber	West Park Healthcare Centre
Lynn Guerriero	Toronto Rehab
Charissa Levy	Toronto ABI Network
Alicja Michalak	St. Michael's Hospital
Judy Moir	Toronto ABI Network
Linda Novotny	West Park Healthcare Centre
Kathi Colwell	Bridgepoint Health
Toronto District Health Council Staff	
Hindy Wasserman	Health Planner
Leslie Sorensen	Senior Health Planner
Cynthia Damba	Epidemiologist
Carley Hay	Epidemiologist

www.abinetwork.ca

Toronto Acquired Brain Injury Network

Recommendations

1. That planning for ABI services in Toronto take on a population-based approach rather than as a response to individuals with ABI in crisis.
2. That services be developed to fill the gaps that currently exist in Toronto and that the mechanisms of funding be appropriate to the model of care.
3. For the community of providers in Toronto and in Ontario to engage in the development of a comprehensive ABI strategy, similar to those that have been developed for other health populations.

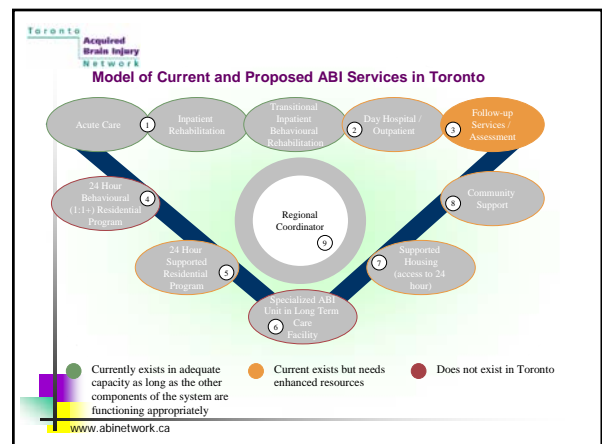
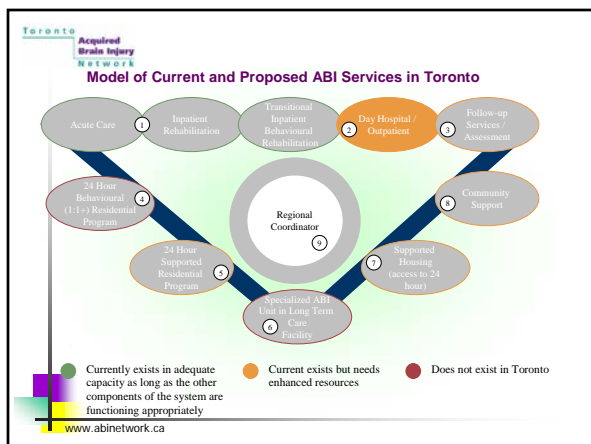
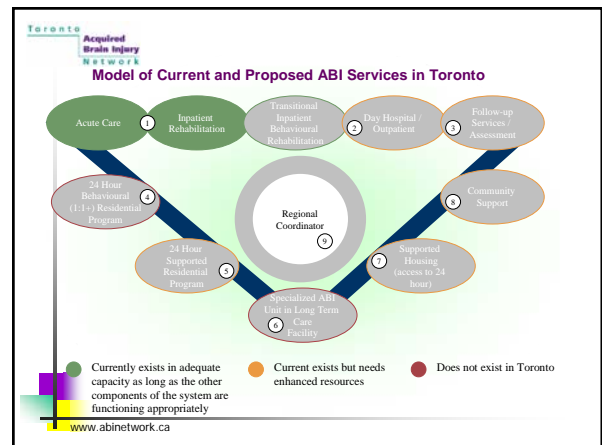
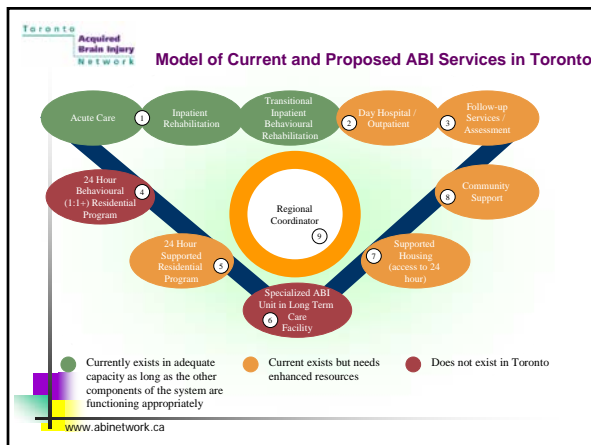
www.abinetwork.ca

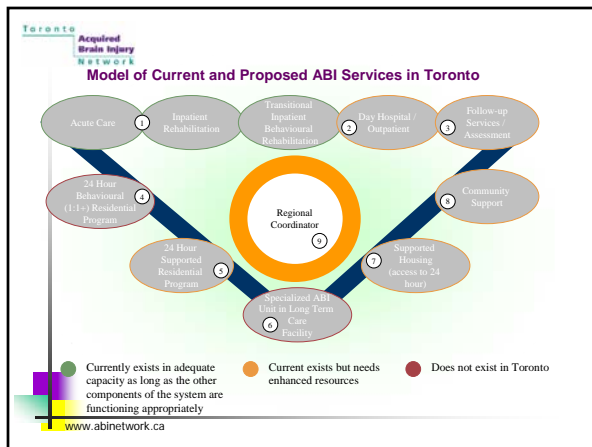
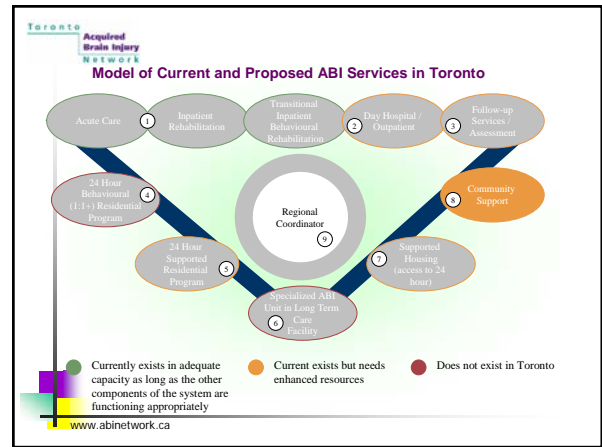
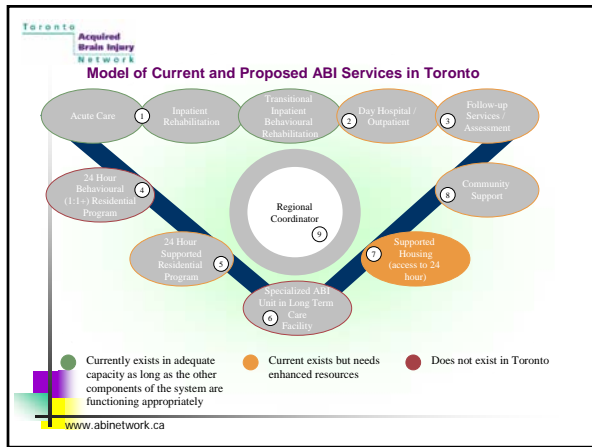
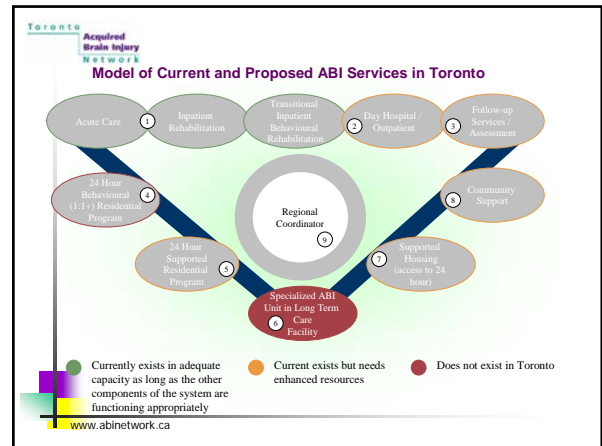
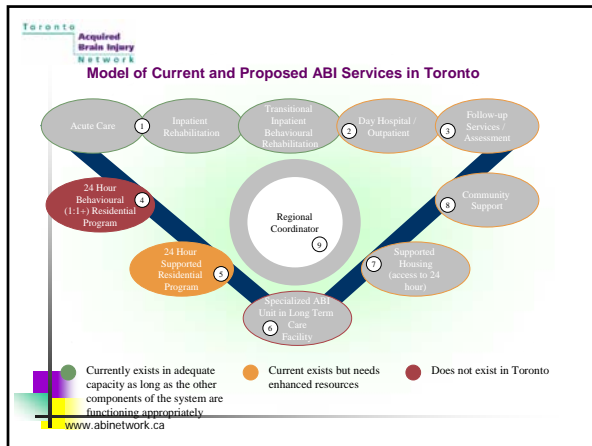
A Framework for Effective Planning of ABI Services

Vision: to ensure accessible and comprehensive services for those living with the effects of an ABI

- Incorporate evidence based indicators for effective evaluation
- Determine indicators and establish baseline
- Investigate best practice benchmarks and establish targets
- Plan services based on best available evidence
- Build on existing services based on understanding of demand and capacity
- Ensure flexible services to accommodate changing needs
- Ensure coordination and access to services
- Develop human resource strategy to support programs
- Ensure adequate funding based on population specific prevalence data
- Estimate future need based on projected incidence and prevalence data
- Estimate service needs based on current gaps and understanding of system trends (e.g., move towards community based support, impact of aging population)
- Identify strengths/gaps in service
- Identify and employ indicators to predict resource requirements
- Identify needs from family/client perspective through community consultations
- Establish protocols for identifying those with mild brain injury
- Systematically collect incidence and prevalence data
- Monitor utilization of health care services
- Collect and analyze wait list information

www.abinetwork.ca





Toronto Acquired Brain Injury Network

Subsequent Activity and Next Steps

- Participation in ONF initiative to develop an ABI database – critical in order to contribute to our ability to take a population based approach to planning for ABI services
- Toronto ABI Network approached the Ontario Neurotrauma Foundation developing a province wide ABI Strategy – discussions have been initiated with a small group of stakeholders to set the framework for this initiative.

www.abinetwork.ca

Toronto Acquired Brain Injury Network

Subsequent Activity and Next Steps

Specific Network initiatives are underway to address gaps in service:

- ABI System Coordinator proposal (in conjunction with PABIAC)
- LTC proposal to develop appropriate resources for those with ABI who are living in LTC Homes
- Neuropsychiatric Education Initiative in response to the shortage of psychiatric resources available for those with ABI

www.abinetwork.ca

Toronto Acquired Brain Injury Network

Subsequent Activity and Next Steps

- Given that community based services were identified as the most significant gap, the Network is proposing a project to further investigate the following:
 - What does a comprehensive, sustainable community-based model of ABI services and support look like? What does it include?
 - What can be learned from other jurisdictions?
 - What guidance exists in the literature?

www.abinetwork.ca

Toronto Acquired Brain Injury Network

Subsequent Activity and Next Steps

Community Based Project Continued...

- Are there ways that institutional and community based services can better support the management of chronic/life-long disability resulting from acquired brain injury?
- Based on what is needed / missing from the system of community-based ABI services as per the framework document, to what extent can these needs be met through reallocation of existing resources?
- What additional support would be needed beyond this? What would the outcomes be and how could we measure these?

Are investigating opportunities to collaborate with 1 or more Toronto area LHINS to extend the reach of this project

www.abinetwork.ca

Toronto Acquired Brain Injury Network

Discussion

www.abinetwork.ca